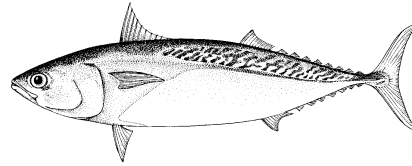


## APPENDIX 18 EXECUTIVE SUMMARY: FRIGATE TUNA (2020)



**Table 1.** Status of frigate tuna (*Auxis thazard*) in the Indian Ocean

Area <sup>1</sup>	Indicators		2020 stock status determination
Indian Ocean	Catch 2019 <sup>2</sup> (MT)	84,738	
	Average catch 2015–2019 (MT)	93,846	
	MSY (MT) (80% CI)	unknown	
	F <sub>MSY</sub> (80% CI)	unknown	
	B <sub>MSY</sub> (MT) (80% CI)	unknown	
	F <sub>current</sub> /F <sub>MSY</sub> (80% CI)	unknown	
B <sub>current</sub> /B <sub>MSY</sub> (80% CI)	unknown		
B <sub>current</sub> /B <sub>0</sub> (80% CI)	unknown		

<sup>1</sup> Boundaries for the Indian Ocean stock assessment are defined as the IOTC area of competence

<sup>2</sup> Proportion of 2019 catch estimated or partially estimated by IOTC Secretariat: 64%

Colour key	Stock overfished (SB <sub>year</sub> /SB <sub>MSY</sub> < 1)	Stock not overfished (SB <sub>year</sub> /SB <sub>MSY</sub> ≥ 1)
Stock subject to overfishing (F <sub>year</sub> /F <sub>MSY</sub> > 1)		
Stock not subject to overfishing (F <sub>year</sub> /F <sub>MSY</sub> ≤ 1)		
Not assessed/Uncertain		

### INDIAN OCEAN STOCK – MANAGEMENT ADVICE

**Stock status.** No quantitative stock assessment is currently available for frigate tuna in the Indian Ocean, and due to a lack of fishery data for several gears, only preliminary stock status indicators can be used. Aspects of the fisheries for frigate tuna combined with the lack of data on which to base an assessment of the stock are a cause for considerable concern. Stock status in relation to the Commission's B<sub>MSY</sub> and F<sub>MSY</sub> reference points remains **unknown** (Table 1).

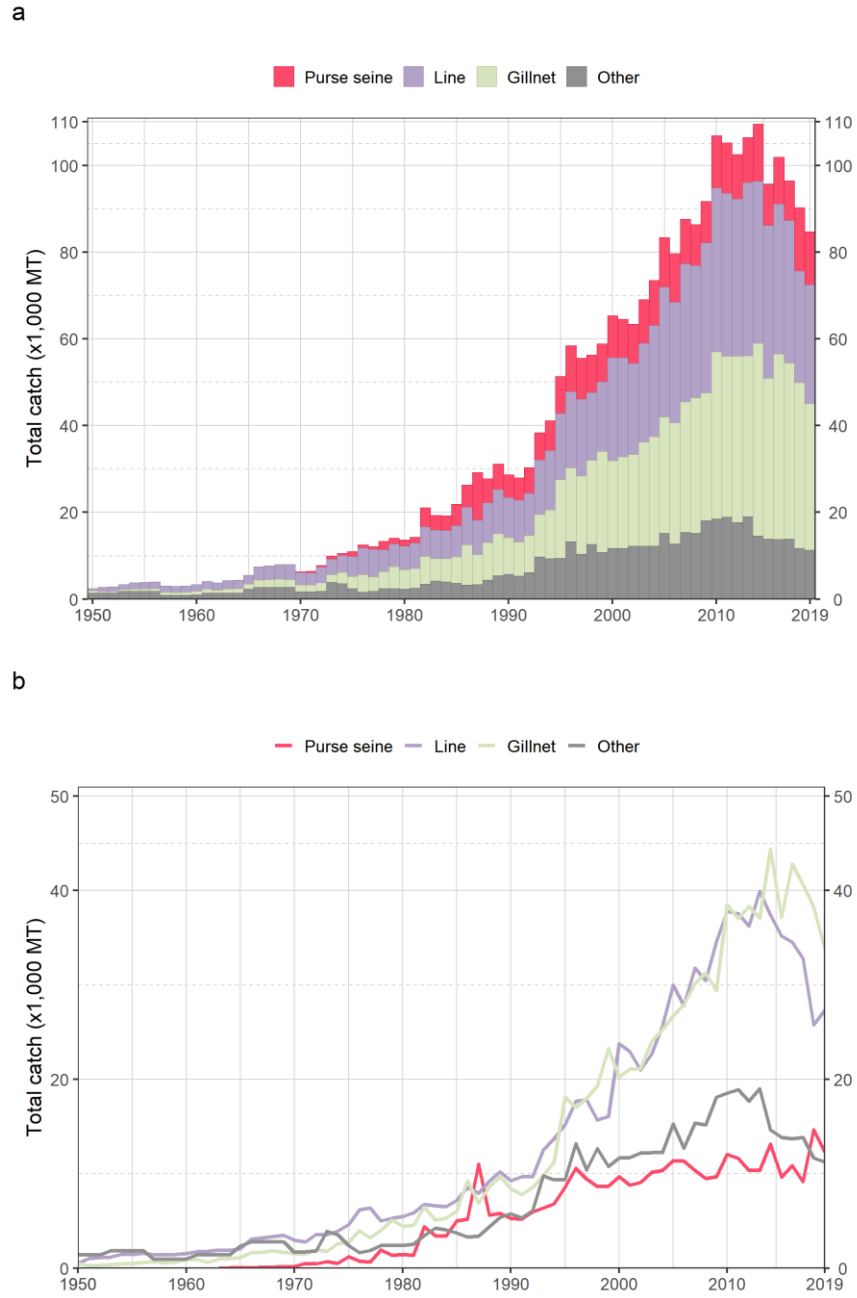
**Outlook.** Estimated catches have increased steadily since the late-1970s, reaching around 30,000 MT in the late-1980's, to between 51,000 and 58,000 MT by the mid-1990s, and steadily increasing to over 90,000 t in the following ten years. Between 2010 and 2014 catches have increased to over 105,000 MT, rising to the highest levels recorded; although catches have since decline marginally to between 92,000 – 102,000 MT since 2014. There is insufficient information to evaluate the effect that this level of catch or a further increase in catches may have on the resource. Research emphasis should be focused on collating catch per unit effort (CPUE) time series for the main fleets, size compositions and life trait history parameters (e.g. estimates of growth, natural mortality, maturity, etc.).

**Management advice.** For assessed species of neritic tunas in Indian Ocean (longtail tuna, kawakawa and narrow barred Spanish mackerel), the MSY was estimated to have been reached between 2009 and 2011 and both F<sub>MSY</sub> and B<sub>MSY</sub> were breached thereafter. Therefore, in the absence of a stock assessment of

frigate tuna a limit to the catches should be considered by the Commission, by ensuring that future catches do not exceed the average catches estimated between 2009 and 2011 (94,921 MT). The reference period (2009-2011) was chosen based on the most recent assessments of those neritic species in the Indian Ocean for which an assessment is available under the assumption that also for bullet tuna MSY was reached between 2009 and 2011. This catch advice should be maintained until an assessment of frigate tuna is available. Considering that MSY-based reference points for assessed species can change over time, the stock should be closely monitored. Mechanisms need to be developed by the Commission to improve current statistics by encouraging CPCs to comply with their recording and reporting requirements, so as to better inform scientific advice.

The following should be also noted:

- The Maximum Sustainable Yield estimate for the Indian Ocean stock is unknown.
- Limit reference points: The Commission has not adopted limit reference points for any of the neritic tunas under its mandate.
- Further work is needed to improve the reliability of the catch series, such as verification or estimation based on expert knowledge of the history of the various fisheries or through statistical extrapolation methods.
- Research emphasis should be focused on collating catch per unit effort (CPUE) time series for the main fleets, size compositions and life trait history parameters (e.g. estimates of growth, natural mortality, maturity, etc.).
- Species identification, data collection and reporting urgently need to be improved.
- There is limited information submitted by CPCs on total catches, catch and effort and size data for neritic tunas, despite their mandatory reporting status. In the case of 2019 catches (reference year 2018), 65% of the total catches were either fully or partially estimated by the IOTC Secretariat, which increases the uncertainty of the stock assessments using these data. Therefore the management advice to the Commission includes the need for CPCs to comply with IOTC data requirements per Resolution 15/01 and 15/02.
- **Main fishing gear (average catches 2015-19):** frigate tuna is mainly caught using gillnets (~41%), coastal longline and trolling, handlines and trolling (~33%), and to a lesser extent coastal purse seine nets. The species is also a bycatch for industrial purse seine vessels and the target of some ring net fisheries.
- **Main fleets (average catches 2015–19):** Catches of frigate tuna are highly concentrated: Indonesia accounts for around 60% of the catches, while over 90% of catches are accounted for by four countries (Indonesia, Pakistan, I.R. Iran and India).



**Fig. 1.** Annual time series of (a) cumulative and (b) individual nominal catches (MT) by gear group for frigate tuna during 1950–2019. Purse seine: coastal purse seine, purse seine, ring net; Line: coastal longline, hand line, troll line; Gillnet: coastal and offshore gillnets, driftnet; Other: all remaining fishing gears